



**THE  
RESTAURANT  
STORE**

# INDIA'S LEADING

**RESTAURANT  
SUPPLY CHAIN  
COMPANY**



# About us

## ■ **One-Stop Solution for Pre-Launch Supply Chain (Food Businesses)**

TRS - The Restaurant Store: India's Leading Restaurant Supply Chain Company TRS, The Restaurant Store, stands as India's largest and most trusted restaurant supply chain company, dedicated to simplifying procurement for restaurant business owners. Offering a comprehensive one-stop solution, TRS excels in providing a diverse range of essential materials for the foodservice industry. From high-quality commercial kitchen equipment and food packaging to an extensive selection of crockery, cutlery, utensils, hardware, and staff uniforms, TRS ensures that every aspect of a restaurant's needs is met efficiently.

What sets TRS apart is its unwavering commitment to quality, service, and customer satisfaction. The company not only supplies top-notch products but also focuses on delivering them with a high level of service excellence, making the procurement process seamless and hassle-free. Cost-effectiveness is a key priority, ensuring that clients receive the best value for their investments without compromising on standards.

## ■ **Direct Sourcing Advantage**

TRS sources directly from manufacturers due to our high-volume requirements, allowing us to offer the most competitive prices by eliminating intermediaries.

## ■ **Dedicated Team for Precise BOQ Creation and Kitchen Layout Design**

TRS goes beyond the conventional role of a supplier. The company provides specialized services like creating customized kitchen layouts, tailored to meet the specific technical specifications of each restaurant. This added value supports restaurant owners in optimizing space, workflow, and efficiency, ultimately contributing to their operational success.

## ■ **Commitment to Product Quality and Exceptional Post-Service Support**

At the heart of TRS's ethos lies a deep-rooted commitment to trust. With transparency in every transaction, the company has earned the confidence of thousands of restaurant owners across India. Quality is not just a promise but a guarantee, as TRS partners only with trusted manufacturers and vendors to deliver durable and reliable products.

In essence, TRS is more than just a supply chain company; it is a partner in the growth and success of India's dynamic restaurant industry, offering comprehensive solutions that cater to the varied needs of the foodservice sector. With a strong focus on trust, quality, and service, TRS has established itself as the go-to source for one-time procurement needs in the restaurant business.



# Our Vendors

# Our Clients

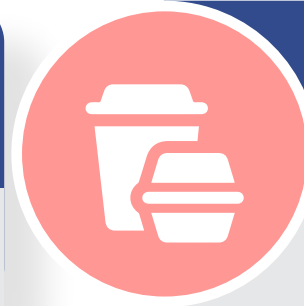


# Our Categories



## Equipments

High-performance kitchen equipment designed for efficiency and durability, catering to every culinary need.



## Packaging

Eco-friendly and sturdy packaging solutions to ensure your food stays fresh and presentable.



## Utensils

Premium-quality utensils that blend style with functionality, perfect for professional chefs.



## Uniform

Comfortable and professional uniforms that keep your team looking sharp.



## Hardware

Reliable and durable hardware essentials to support every aspect of your kitchen's operations, ensuring seamless functionality.

# Commercial Kitchen Equipments

---



## CHINESE BURNER RANGE (2+1) BURNER



### Use

Used for all types of cooking-stir frying, deep frying, stewing, braising, boiling Chinese soup & noodles in the cookware

### Specification:

- Made of Stainless Steel AISI-304 included angle frame
- Operate LPG/PNG Gas as per requirement.
- With 2 Nos. High Pressure (T35) & 1 Nos. Indian (G10) Burner
- Perforated 1" Dia S.S. pipe with 3 mm Dia Holes for water spray at front
- Individual Control & Pilot Knob
- 1 Nos. 600 mm long gooseneck type of Swivel faucet mounting on
- Back Splash

## TWO BURNER COMBI RANGE



### Use

Used for all types of cooking-stir frying, deep frying, stewing, braising, boiling Chinese soup & noodles in the cookware

### Specification:

- Made of Stainless Steel AISI-304 included angle frame
- Operate LPG/PNG Gas as per requirement
- Individual Control & Pilot Knob
- With 1 Nos. High Pressure (T35) & 1 Nos. Indian (G10) Burner
- Perforated 1" Dia S.S. pipe with 3 mm Dia Holes for water spray at front
- Individual Control & Pilot Knob
- 1 Nos. 400 mm long gooseneck type of Swivel faucet mounting on
- Back Splash

### Use

Used for all types of cooking-stir frying, deep frying, stewing, braising, boiling Chinese soup & noodles in the cookware

### Specification:

- Made of Stainless Steel AISI-304 included angle frame
- Operate LPG/PNG Gas as per requirement.
- With 2 Nos. High Pressure (T35) & 1 Nos. Indian (G9) Burner
- Perforated 1" Dia S.S. pipe with 3 mm Dia Holes for water spray at front.
- Individual Control & Pilot Knob
- 1 Nos. 500 mm long gooseneck type of Swivel faucet mounting on
- Back Splash

## CHINESE BURNER RANGE (2+1) BURNER



### Use

Used for all types of cooking-stir frying, deep frying, stewing, braising, boiling Chinese soup & noodles in the cookware

### Specification:

- Made of Stainless Steel AISI-304 included angle frame
- Operate LPG/PNG Gas as per requirement
- Individual Control & Pilot Knob
- With 2 Nos. High Pressure (T35)
- Individual Control & Pilot Knob

## SINGLE BURNER CHINESE RANGE



## CHINESE BURNER RANGE (2+1) BURNER



### Use

Used for all types of cooking-stir frying, deep frying, stewing, braising, boiling Chinese soup & noodles in the cookware

### Specification:

- Made of Stainless Steel AISI-304 included angle frame
- Operate LPG/PNG Gas as per requirement.
- With 2 Nos. High Pressure (T35) & 1 Nos. Indian (G9) Burner
- Perforated 1" Dia S.S. pipe with 3 mm Dia Holes for water spray at front.
- Individual Control & Pilot Knob
- 1 Nos. 500 mm long gooseneck type of Swivel faucet mounting on
- Back Splash

## TWIN TANK DEEP FAT FRYER



### Use

Used for cooking many fast foods likes, potatoes & other culinary & confectionary product, and making crisp at Canteen, School Mess & Hotel Mess in the cookware.

### Specification:

- Made of Stainless Steel included angle framework with auto Timer &
- temperature controller
- It has two Tanks with 8 Ltr. Oil capacities with bottom drain wall
- Temperature can be smoothly controlled within the range +20°+190°

# Cooking Range

## MASALA TROLLEY



### Use

Keep vivid type of spices or masalas in a fresh and hygienic way in commercial kitchen

### Specification:

- Made of Stainless Steel
- 12 Nos. Stainless 1/6\*150 Deep GN Pan with Lid
- 1 Nos. S.S. Handle
- 4 Nos. 5" Diameter heavy duty rubber tired Swivel type caster two with brake

### Use

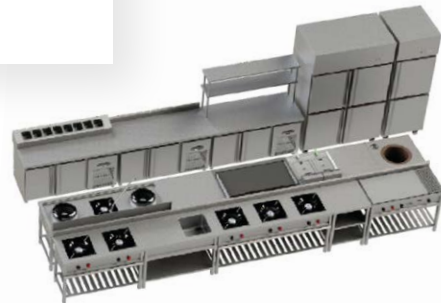
Used for cooking Tandoori Roti / Naan / Paratha in the cookware

### Specification:

- Outer Body Made of Stainless Steel & Inner Body made of MS
- Between outer & Inner Body have 25 mm thick tightly glass wool insulation.
- Commercial grade heavy duty 50 mmm thick Clay pot Tandoor
- Available Charcoal Operated & Gas Operated as per requirement

Dimension
30"x30"x34"/36"+4"
32"x32"x34"/36"+4"
34"x34"x34"/36"+4"
36"x36"x34"/36"+4"

## TANDOOR



# Bulk & Canteen Equipment

## SINGLE BURNER BULK COOKING RANGE



### Use

Bulk Cooking for Industrial Canteen, School Mess & Hotel Mess

### Specification:

- Made of Stainless Steel included angle framework
- Operate LPG/PNG Gas as per requirement
- Individual Control & Pilot Knob

### Use

Bulk Cooking for Industrial Canteen, School Mess & Hotel Mess

### Specification:

- Made of Stainless Steel included angle framework
- Operate LPG/PNG Gas as per requirement
- Individual Control & Pilot Knob

## TWO BURNER BULK COOKING RANGE



### Use

Bulk Cooking for Industrial Canteen, School Mess & Hotel Mess

### Specification:

- Made of Stainless Steel included angle framework
- Operate LPG/PNG Gas as per requirement
- Individual Control & Pilot Knob

## THREE BURNER BULK COOKING RANGE



# Preparation & Bakery Equipments

## DOUGH KNEADING MACHINE



### Use

Used for Mixing Flour/Aata in Restaurant kitchen, Industrial canteen.

### Specification:

- Bowl & Kneading Shaft made of stainless Steel
- Rugged MS Construction - Painted.
- Powerful gear driven
- Robust durable design

### Use

Used for Grinding wet pulses, red chillies, turmeric & Black pepper & Gravy etc

### Specification:

- Made of stainless Steel Body
- Five numbers of different size holes screen for getting different mesh powders.
- Robust durable design

## PULVERISER



## TILTING WET MASALA GRINDER



### Use

Grinders are used widely used for grinding various Indian spices & Rava for Dasa.

### Specification:

- The Drum, Motor housing, Frames are made of High-Quality Stainless Steel
- Detachable Cylindrical Granite Roller Stone Assembly.
- Unique adjustable Load Balancing System provided for even spread of load
- and for very efficient grinding
- Tilting system enables the drum to tilt and lock at 100 degrees for easier

### Use

Used for peeling potato & other edible roots at Restaurant kitchen, Industrial canteen.

### Specification:

- The body of machine made of stainless Steel
- Strong emery bonding for peeling.
- Operations with running water supply
- Drain outlet provided for waste disposal

## POTATO PEELER



## WET MASALA GRINDER



### Use

Grinders are used widely used for grinding various Indian spices & Rava for Dasa

### Specification:

- Bowl made of stainless Steel
- Detachable Cylindrical Granite Roller Stone Assembly
- Powerful gear driven
- The Granite Roller Stone Assembly is fitted with two Wipers to ensure
- 100% grinding in quicker time

## VEGETABLE CUTTING MACHINE



### Use

Used for cutting & slicing fresh & cooked vegetables & fruits at Restaurant kitchen, Industrial canteen & public catering.

### Specification:

- The body of machine made of stainless Steel
- Comprehensive range of 7 discs for slicing, ripple cutting, grating and cutting into sticks, strips or with optimum.
- High-speed electric motor for continuous cuttings
- Robust durable design



## MEAT MINCER (ELECTRIC)



### Use

Used for mincing meat & fish for stuffing sausages at Restaurant kitchen, catering enterprises.

### Specification:

- All the components are made of stainless Steel
- The Hopper diameter is 40 mm
- The standard delivery set includes a screw, a grater plate, two blades,
- a plate 9 mm & a plate 5 mm
- Robust durable design

### Use

Used for mixing both light & dough kneading at bakeries & public catering enterprises.

### Specification:

- The spiral, the bowl & the dough breaker are made of stainless steel
- White painted steel structure.
- Powerful gear driven
- Available manual control & digital control model

## SPIRAL DOUGH MIXER



## PLANETARY/BAKERY MIXTURE



### Use

A planetary mixer is industrial mixing equipment used to prepare food, chemical, ceramic dough or other types of products, replacing manual labour through a mechanical system that allows us to produce continuously large quantities of dough.

### Specification:

- Bowl made of stainless Steel
- Detachable Cylindrical Granite Roller Stone Assembly
- Powerful gear driven
- The Granite Roller Stone Assembly is fitted with two Wipers to ensure
- 100% grinding in quicker time

## SINGLE DECK OVEN



### Use

Used for baking confectionery & bakery products like Biscuit, Chips, Donut, Cakes, and Breads at public catering enterprises.

#### GAS OPERATED:-

Model	Capacity	Wattage (W)	Voltage	Thermal Load MJ/Hr	Dimension	No. of Baking Tray
RDP10-A	10 Kg/Hr.	48	230V-1P	40 MJ/Hr. 0.9Kg Gas/Hr.	40"x29"x22"	1
RDP10-B	20 Kg/Hr.	60	230V-1P	60 MJ/Hr. 1.2Kg Gas/Hr.	53"x36"x26"	2

#### ELECTRIC OPERATED:-

Model	Capacity	Wattage (W)	Voltage	Dimension	No. of Baking Tray
RDP10-C	20 Kg/Hr.	6600	230V-1P	50"x34"x24"	2

### Use

Used for baking confectionery & bakery products like Biscuit, Chips, Donut, Cakes, and Breads at public catering enterprises.

#### ELECTRIC OPERATED:-

Model	Capacity	Wattage (W)	Voltage	Dimension	No. of Baking Tray
RDP11-B	40 Kg/Hr.	13200	440V-3P	50"x34"x48"	4

## DOUBLE DECK OVEN



## THREE DECK OVEN



### Use

Used for baking confectionery & bakery products like Biscuit, Chips, Donut, Cakes, and Breads at public catering enterprises.

#### GAS OPERATED:-

Model	Capacity	Wattage (W)	Voltage	Thermal Load MJ/Hr	Dimension	No. of Baking Tray
RDP12-A	60 Kg/Hr.	180	230V-1P	180 MJ/Hr. 3.6Kg Gas/Hr.	53"x36"x72"	6
RDP12-B	90 Kg/Hr.	210	230V-1P	210 MJ/Hr. 4.2Kg Gas/Hr.	70"x36"x26"	9

#### ELECTRIC OPERATED:-

Model	Capacity	Wattage (W)	Voltage	Dimension	No. of Baking Tray
RDP12-C	60 Kg/Hr.	19800	440V-3P	50"x34"x64"	6
RDP12-D	90 Kg/Hr.	25200	440V-3P	66"x34"x65"	9

# Cooking Range

## SINGLE BURNER INDIAN COOKING RANGE



### Use

Used for cooking rst, second & third course dishes in the cookware.

### Specification:

- Made of Stainless Steel AISI-304 included angle framework
- Operate LPG/PNG Gas as per requirement
- Individual Control & Pilot Knob
- Heavy duty top cast iron
- Removable Type Drip Tray

### Use

Used for cooking first, second, & third course dishes in the cookware.

### Specification:

- Made of Stainless Steel AISI-304 included angle framework
- Operate LPG/PNG Gas as per requirement.
- Individual Control & Pilot Knob
- Heavy duty top cast iron
- Removable Type Drip Tray

## TWO BURNER INDIAN COOKING RANGE



### Use

Used for cooking first, second & third course dishes in the cookware.

### Specification:

- Made of Stainless Steel AISI-304 included angle framework
- Operate LPG/PNG Gas as per requirement.
- Individual Control & Pilot Knob
- Heavy duty top cast iron
- Removable Type Drip Tray

## THREE BURNER INDIAN COOKING RANGE



## FOUR BURNER CONTINENTAL RANGE



### Use

Used for cooking Continental-Italian & Mexican dishes in the cookware.

### Specification:

- Made of Stainless Steel AISI-304 included angle framework
- Operate LPG/PNG Gas as per requirement.
- Individual Control & Pilot Knob
- Heavy duty top cast iron
- Removable Type Drip Tray

### Use

Used for cooking Dosa, Uttapam, Paratha & Pancakes due to the direct contact of the food with the frying surface in the cookware.

### Specification:

- Made of Stainless Steel AISI-304 included angle framework
- Operate LPG/PNG Gas as per requirement
- 2 Nos. RV Burner & 1 Nos. Pilot Burner
- 15 mm Thick Polished MS Cooktop
- At the front panel there is a collector Oil tray

## DOSA / HOT PLATE



## CHAPATI PLATE WITH PUFFER



### Use

Used for cooking Chapati / Phulka / Roti in the cookware

### Specification:

- Made of Stainless Steel AISI-304 included angle framework
- Operate LPG/PNG Gas as per requirement.
- 2 Nos. RV Burner, 1 Nos. Pilot Burner & 1 Nos Puffer Burner.
- 12 mm Thick Polished MS Cooktop.
- At the front panel there is a collector Oil tray

# Preparation & Bakery Equipments

## HEAVY DUTY INDUSTRIAL MIXER



### Use

Used for special gravy of all type of vegetable, wet & Dry grinding of grain & nut grinding at public catering enterprises.

### Specification:

- Body made of stainless Steel
- Easy to Clean
- Robust durable design

3.0	5.0
1.0 HP (0.75 Kw)	1.5 HP (1.0 Kw)
230V	230V

Conveyer Belt (wide in mm)	500
Conveyer Belt (Length in mm)	2000
Voltage / Phase (V/Ph)	380-415 / 3
Frequency (Hz)	50
Wattage (W)	400
Dimension	2540 x 910 x 1150
Weight (Kg)	235

## DOUGH SHEETER



## ICE CRUSHER



### Use

This electric ice crusher is great to make troublesome big ice cubes into snow cone at ease.

### Specification:

- The upgraded groove fits both tray and cup to contain shaved ices, more practical.
- With a drain pipe to avoid a wet working environment after use.
- It adopts double shaving blades, which greatly increases the crush efficiency and
- meets the demand of commercial use.
- The handle is covered with insulated rubber to ensure safe and

# Dish Wash & Pot Wash Equipment

## THREE SINK UNIT



Unit Size	Sink Size
66"x24"x34"+6"	18"x18"x12"
60"x24"x34"+6"	16"x16"x10"

Unit Size	Sink Size
48"x24"x34"+6"	18"x18"x12"
42"x24"x34"+6"	16"x16"x10"

## TWO SINK UNIT



## SINGLE SINK UNIT



Unit Size	Sink Size
24"x24"x34"+6"	18"x18"x12"
20"x24"x34"+6"	16"x16"x10"

# Dish Wash & Pot Wash Equipment

## POT RACK



Unit Size	No. of Shelves
48"x24"x66"/72"	3,4
54"x24"x66"/72"	3,4
60"x27"x66"/72"	3,4

## WALL SHELF



Unit Size
48"x12"
54"x12"
60"x12"
66"x12"
72"x12"

## Unit Size

48"x24"x34"+6"

60"x27"x34"+6"

## DISHLANDING TABLE WITH GARBAGE CHUTE



## Use

Used for cooking rst, second & third course dishes in the cookware.

## Specification:

Made of Stainless Steel AISI-304 included angle framework -  
Operate LPG/PNG Gas as per requirement. -  
Individual Control & Pilot Knob -  
Heavy duty top cast iron -  
Removable Type Drip Tray -

## POT WASH SINK



## CLEAN DISH RACK



Unit Size	No. of Shelves
44"x20"x72"/66"	4,5
48"x24"x72"/66"	4,5
54"x24"x72"/66"	4,5

## SOILED DISH COLLECTION TROLLEY



## Use

Used for cooking rst, second & third course dishes in the cookware.

## Specification:

-Made of Stainless Steel AISI  
-304 included angle framework  
-Operate LPG/PNG Gas as per requirement.  
-Individual Control & Pilot Knob  
-Heavy duty top cast iron  
-Removable Type Drip Tray

# Refrigeration Equipment

## UNDER COUNTER REFRIGERATOR (RDE-001)



### Specification:

- 60 mm thick polyurethane insulation for better energy efficiency.
- Stainless steel AISI 304 internal & external panels.
- Refrigerated models have operating temperature that can be adjusted -2 to 10 °C.
- Self Closing Doors with magnetic Gasket.
- Forced air circulation for rapid cooling & an even temperature distribution.
- 4 Nos. adjustable S.S. wire mesh shelves.

W= Width available 24" / 27" / 30"  
Available Static Cooling & -18 to -20 °C.

### Specification:

- 60 mm thick polyurethane insulation for better energy efficiency.
- Stainless steel AISI 304 internal & external panels.
- Refrigerated models have operating temperature that can be adjusted -2 to 10 °C.
- Self Closing Doors with magnetic Gasket.
- Forced air circulation for rapid cooling & an even temperature distribution.
- 4 Nos. adjustable S.S. wire mesh shelves.
- 8 Nos. (1/6)\*100 Deep cold GN Pan with lid for store mizzas.

W= Width available 24" / 27" / 30"  
Available Static Cooling & -18 to -20 °C.

## MAC-LINE CUM UNDER COUNTER REFRIGERATOR (RDE-002)



### Specification:

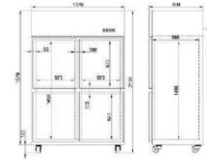
- 60 mm thick polyurethane insulation for better energy efficiency.
- Stainless steel AISI 304 internal & external panels.
- Refrigerated models have operating temperature that can be adjusted -2 to 10 °C.
- Self Closing Doors with magnetic Gasket.
- Forced air circulation for rapid cooling & an even temperature distribution.
- 4 Nos. adjustable S.S. wire mesh shelves.
- Two number of overhead shelves are provided for easy pick up

## PICK UP COUNTER WITH UCR (RDE-002)



# Refrigeration Equipment

## FOUR DOOR VERTICAL REFRIGERATORS (RDE-1250)



### Specification:

- 60 mm thick polyurethane insulation for better energy efficiency.
- Stainless steel AISI 304 internal & external panels including back panel.
- Large storage area suitable to contain 2/1 GN pan & 6 Nos. adjustable S.S. wire mesh shelves.
- Refrigerated models have operating temperature that can be adjusted -2 to 10 °C.
- Self Closing Doors with magnetic Gasket.
- Auto defrosting and auto evaporation of condensation water.
- Digital controller allows for temperature & parameter setting.
- Performance at ambient temperature of + 43 °C.
- Forced air circulation for rapid cooling & an even temperature distribution.

### Technical Specification:

- Supply Voltage: - 230 V/ 1 ph/50Hz (675 Watts)
- Current: - 3.85 amp.
- Ltr. Capacity: - 1250 Ltr.
- External Dimension: - 1370 x 800 x 2100 mm
- Refrigerant Type: - R134a (550 g)

- Operating Temp Min.: -2 °C.
- Operating Temp Max.: 10 °C.
- Operating Mode: Ventilated
- Cooling Unit: Inbuilt
- Defrost Type: Electric

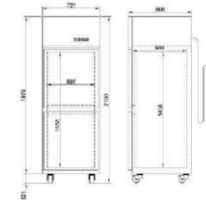
### Specification:

- 60 mm thick polyurethane insulation for better energy efficiency.
- Stainless steel AISI 304 internal & external panels including back panel.
- Large storage area suitable to contain 2/1 GN pan & 3 Nos. adjustable S.S. wire mesh shelves.
- Refrigerated models have operating temperature that can be adjusted -2 to 10 °C.
- Self Closing Doors with magnetic Gasket.
- Auto defrosting and auto evaporation of condensation water.
- Digital controller allows for temperature & parameter setting.
- Performance at ambient temperature of + 43 °C.
- Forced air circulation for rapid cooling & an even temperature distribution.

### Technical Specification:

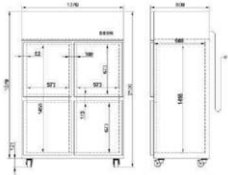
- Supply Voltage: - 230 V/ 1 ph/50Hz (475 Watts)
- Ltr. Capacity: - 600 Ltr.
- External Dimension: - 721 x 800 x 2100 mm
- Refrigerant Type: - R134a (300 g)
- Operating Temp Min.: -2 °C.
- Operating Temp Max.: 10 °C.
- Operating Mode: Ventilated
- Cooling Unit: Inbuilt
- Defrost Type: Electric

## TWO DOOR VERTICAL REFRIGERATORS (RDE-600)



# Refrigeration Equipment

## DOUBLE GLASS DOOR REFRIGERATOR (RDE-1250G)



### Specification:

- 60 mm thick polyurethane insulation for better energy efficiency.
- Stainless steel AISI 304 internal & external panels including back panel.
- Large storage area suitable to contain 2/1 GN pan & 6 Nos. adjustable
- S.S. wire mesh shelves.
- Refrigerated models have operating temperature that can be adjusted -2 to 10 °C.
- Self Closing Doors with magnetic Gasket.
- Auto defrosting and auto evaporation of condensation water.
- Digital controller allows for temperature & parameter setting.
- Performance at ambient temperature of + 43 °C.
- Forced air circulation for rapid cooling & an even temperature distribution

### Technical Specification:

- Supply Voltage: - 230 V/1 ph/50Hz (475 Watts)
- Ltr. Capacity: - 600 Ltr.
- External Dimension: - 721 x 800 x 2100 mm
- Refrigerant Type: - R134a (300 g)
- Operating Temp Min.: -2 °C.
- Operating Temp Max.: 10 °C.
- Operating Mode: Ventilated
- Cooling Unit: Inbuilt
- Defrost Type: Electric

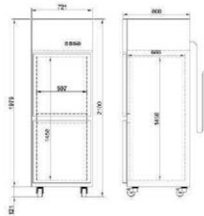
### Specification:

- 60 mm thick polyurethane insulation for better energy efficiency.
- Stainless steel AISI 304 internal & external panels including back panel.
- Large storage area suitable to contain 2/1 GN pan & 3 Nos. adjustable S.S. wire mesh shelves.
- Refrigerated models have operating temperature that can be adjusted -2 to 10 °C.
- Self Closing Doors with magnetic Gasket.
- Auto defrosting and auto evaporation of condensation water.
- Digital controller allows for temperature & parameter setting.
- Performance at ambient temperature of + 43 °C.
- Forced air circulation for rapid cooling & an even temperature distribution.

### Technical Specification:

- Supply Voltage: - 230 V/1 ph/50Hz (475 Watts)
- Ltr. Capacity: - 600 Ltr.
- External Dimension: - 721 x 800 x 2100 mm
- Refrigerant Type: - R134a (300 g)
- Operating Temp Min.: -2 °C.
- Operating Temp Max.: 10 °C.
- Operating Mode: Ventilated
- Cooling Unit: Inbuilt
- Defrost Type: Electric

## SINGLE GLASS DOOR REFRIGERATOR (RDE-600G)



# Work Table and Trolley

## WORK TABLE WITH 2 U.S.



### Unit Size

36"x24"x34"+4"
48"x24"x34"+4"
60"x24"x34"+4"
72"x24"x34"+4"

## WORK TABLE WITH 2 U.S. & 2 OHS



### Unit Size

36"x24"x34"+18"+12"
48"x24"x34"+18"+12"
60"x24"x34"+18"+12"
72"x24"x34"+18"+12"

## WORK TABLE WITH DRAWER & SLIDING SHUTTER



### Unit Size

36"x24"x34"+4"
48"x24"x34"+4"
60"x24"x34"+4"
72"x24"x34"+4"

# Work Table and Trolley

PICK UP TABLE WITH RR SYSTEM



Unit Size
36"x24"x34"+4"
48"x24"x34"+4"
60"x24"x34"+4"
72"x24"x34"+4"

UTILITY TROLLEY



**Use**

Used for cooking rst, second & third course dishes in the cookware

**Specification:**

Made of Stainless Steel AISI-304 included angle framework- Operate LPG/PNG Gas as per requirement- Individual Control & Pilot Knob- Heavy duty top cast iron- Removable Type Drip Tray-

THREE SIDE COVERING TABLE WITH 2 U.S.



Unit Size
36"x24"x34"+4"
48"x24"x34"+4"
60"x24"x34"+4"
72"x24"x34"+4"

WORK TABLE WITH CROSS BRACING



Unit Size
36"x24"x34"+4"
48"x24"x34"+4"
60"x24"x34"+4"
72"x24"x34"+4"

WORK TABLE WITH SINK



Unit Size	No. of U.S.
36"x24"x34"+4"	1
48"x24"x34"+4"	1
60"x24"x34"+4"	2
72"x24"x34"+4"	2

BUSSING CART



Unit Size
36"x24"x34"+4"

# Work Table and Trolley

PICK UP TABLE WITH RR SYSTEM



Unit Size
36"x24"x34"+4"
48"x24"x34"+4"
60"x24"x34"+4"
72"x24"x34"+4"

UTILITY TROLLEY



**Use**

Used for cooking rst, second & third course dishes in the cookware

**Specification:**

Made of Stainless Steel AISI-304 included angle framework- Operate LPG/PNG Gas as per requirement- Individual Control & Pilot Knob- Heavy duty top cast iron- Removable Type Drip Tray-

THREE SIDE COVERING TABLE WITH 2 U.S.

Unit Size
36"x24"x34"+4"
48"x24"x34"+4"
60"x24"x34"+4"
72"x24"x34"+4"



WORK TABLE WITH CROSS BRACING

Unit Size
36"x24"x34"+4"
48"x24"x34"+4"
60"x24"x34"+4"
72"x24"x34"+4"



WORK TABLE WITH SINK



Unit Size	No. of U.S.
36"x24"x34"+4"	1
48"x24"x34"+4"	1
60"x24"x34"+4"	2
72"x24"x34"+4"	2

BUSSING CART



Unit Size
36"x24"x34"+4"



# Work Table and Trolley

## PLATFORM TROLLEY



Unit Size
36"x24"x36"

## MOBILE TRAY SET UP RACK & GN PAN TROLLEY

Unit Size	No. of U.S.
20"x27"x72"	19 Tray



## WATER COOLER



Dimension	Cooling Capacity	Storage Capacity	Power Consum.
22"x22"x48"	40 Ltr.	80 Ltr.	430 W
24"x24"x56"	60 Ltr.	120 Ltr.	680 W
24"x24"x60"	150 Ltr.	150 Ltr.	1300 W
28"x28"x65"	200 Ltr.	250 Ltr.	1900 W
32"x32"x65"	300 Ltr.	300 Ltr.	2100 W

# Exhaust Hood

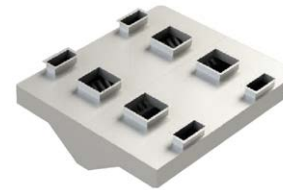
## ISLAND TYPE EXHAUST HOOD



### Specification:

- Made of Stainless Steel Body with external & internal parts.
- With S.S. removable type baffle slat filters.
- Adjustable type PVC fresh air grills (4"x2.5") for provision of fresh air cooling.
- Included LED surface light.
- With removable type S.S. Oil Collection Box
- 100 mm High range collar at top for connecting to the exhaust Duct.
- Model over 3 meters are supplied in two pieces with a robust concealed connection for easy assembly.

Unit Size	No. of U.S.
20"x27"x72"	19 Tray



## AIR EXHAUST HOOD WITH FRESH AIR & LIGHT



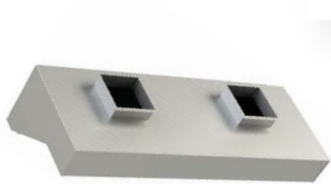
### Specification:

- Made of Stainless Steel Body with external & internal parts.
- With S.S. removable type baffle slat filters.
- Adjustable type PVC fresh air grills (4"x2.5") for provision of fresh air cooling.
- Included LED surface light.
- With removable type S.S. Oil Collection Box
- 100 mm High range collar at top for connecting to the exhaust Duct.
- Model over 3 meters are supplied in two pieces with a robust concealed connection for easy assembly.

Unit Size	No. of U.S.
20"x27"x72"	19 Tray

# Exhaust Hood

## EXHAUST HOOD



### Specification:

- Made of Stainless Steel Body with external & internal parts.
- With S.S. removable type baffle slat filters.
- With removable type S.S. Oil Collection Box
- 100 mm High range collar at top for connecting to the exhaust Duct.
- Model over 3 meters are supplied in two pieces with a robust concealed connection for easy assembly.

Unit Size	No. of U.S.
20"x27"x72"	19 Tray

## DRAIN TROUGH GRATING - RDEGI



### Specification:

- Removable S.S. Grating of S.S. 304. Grating with 3 mm m Thick Flange
- Minimum Point Load: 150 Kg. per Sq. meter.
- Trough made 16 SWG S.S. 304
- Trough provided with drain outlet at centre.
- Removable type perforated Basket

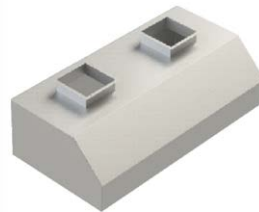
Dimension	Cooling Capacity	Storage Capacity	Power Consum.
22"x22"x48"	40 Ltr.	80 Ltr.	430 W
24"x24"x56"	60 Ltr.	120 Ltr.	680 W
24"x24"x60"	150 Ltr.	150 Ltr.	1300 W
28"x28"x65"	200 Ltr.	250 Ltr.	1900 W
32"x32"x65"	300 Ltr.	300 Ltr.	2100 W

### Specification:

- Made of Stainless Steel Body with external & internal parts.
- 100 mm High range collar at top for connecting to the exhaust Duct.
- Model over 3 meters are supplied in two pieces with a robust concealed connection for easy assembly

Unit Size	No. of U.S.
20"x27"x72"	19 Tray

## VAPOUR HOOD FOR DISHWASHER



# KITCHEN EQUIPMENT

## PIZZA OVEN



Unit Size	Power (Kw)
32"x17"x16"	2.0 Kw.
32"x17"x19"	3.0 Kw.
42"x17"x16"	4.0 Kw.



## SALAMANDER

Unit Size	Power (Kw)
32"x17"x16"	2.0 Kw



## DEEP FAT FRYER

Unit Size	Power (Kw)
11"x17"x8"	3.0 Kw
8"x17"x8"	2.0 Kw

## SANDWICH GRILLER (SINGLE)



Unit Size	Power (Kw)
11"x15"x8"	2.0 Kw.
14"x17"x8"	3.0 Kw.



## SANDWICH GRILLER (DOUBLE)

Unit Size	Power (Kw)
23"x15"x8"	4 Kw



## CATERING BURNER

Unit Size
12"x12"x12
14"x14"x12
16"x16"x12

## IDLI / KHAMAN DHOKLA STEAMER



Unit Size	Idli Capacity
x38"	60 Idli
x48"	96 Idli
x42"	150 Idli



## CATERING DOSA PLATE

Unit Size
30"x18"x14"



## CATERING CHAPATTI PUFFER

Unit Size
30"x18"x14"

# Food Packaging

---



# PET Hinged Box

LARGE BURGER BOX



PAPER HOT 'N' CRISPY BAGS



TASTE KRAFT FOOD BOXES WITH WINDOWS



BURGER BOX



PAPER MEAL BOX - KRAFT



PAPER MEAL BOX - WHITE



# Take Away Box

## PIZZA BOX - WHITE



Pizza Box - White  
Available Size:  
6" / 7" / 8" / 9" / 10" / 12"

## BURGER BOX - WHITE



White Burger Box  
Available Size: 4.5X4.5X3"

## SINGLE SANDWICH BOX WHITE



Single Sandwich Box  
Available Size:  
5.35X5.35X7.5X1.125"

## PIZZA BOX - KRAFT



Pizza Box - Kraft  
Available Size: 7" / 8"

## BURGER BOX - KRAFT



Kraft Burger Box  
Available Size: 4.5X4.5X3"

## SINGLE SANDWICH BOX KRAFT



Jumbo Sandwich Box  
Available Size:  
5.5X5.5X8X2.25"

# Take Away Box

## DOSA BOX



## GARLIC BREAD BOX



Garlic Bread Box

Available Size:  
8.75X4.75X1.5"

## PARANTHA / SNACK BOXES



Parantha / Snacks Box

Available Size: 3.5X4X1.5"

## LONG DOSA BOX



Long Dosa Box

Available Size: 13.25X4X2"

## ROLL BOX



Roll Box

Available Size: 8X2.25X1.75"

## FRENCH FRIES HOLDER



French Fries

Available Size: 3.5X4X1.5"

# Cake & Pastry Box

2 PC PASTRY BOX



4 PC PASTRY BOX



6 PC PASTRY BOX



CAKE BOX



WINDOW CAKE BOX



CUP CAKE BOX





# Cake & Pastry Box

2 PC CUP CAKE BOX



4 PC CUP CAKE BOX



6 PC CUP CAKE BOX



1 PC CUP BROWNIE BOX



2 PC CUP BROWNIE BOX



4 PC CUP BROWNIE BOX



# Alluminium Container

ALUMINUM CONTAINER  
250ML



250ml

ALUMINUM CONTAINER  
400 ML



400ml

ALUMINUM CONTAINER  
650 ML



650ml

ALUMINUM CONTAINER  
750 ML



750ml

# PP Leak Proof Take Away

PASTA TRAY



Pasta Tray - RTB - 030

Pasta Tray - RTB - 040



Pasta Tray - RTB - 060

PLATTER THALI WITH LID-  
WHITE



2CP Platter Thali - White



3CP Platter Thali - White



5CP Platter Thali - White



8CP Platter Thali - White

# PP Leak Proof Take Away

ROUND CONTAINER - BLACK 100/200/300 ML



ROUND CONTAINER - BLACK 500/750 ML



ROUND CONTAINER - BLACK 1000/1200/1500 ML



SALAD BOWL



RE BLACK CONTAINER 500/650/750/1000 ML



PLATTER THALI WITH LID - BLACK



# Eco Friendly Takeaway Bowl

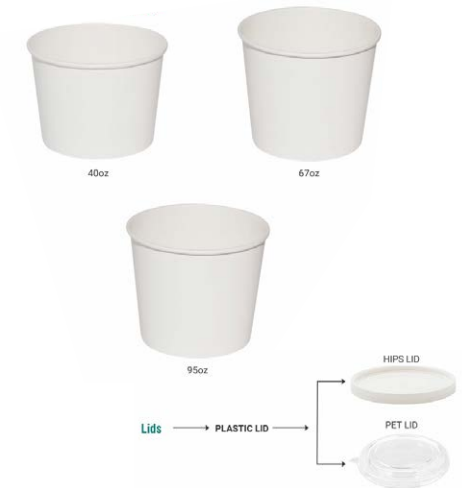
## PAPER DIP



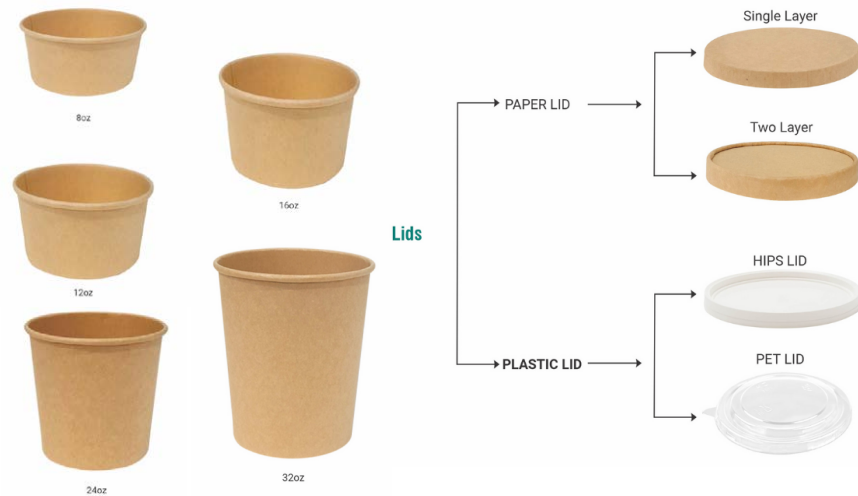
## PAPER SALAD BOWL



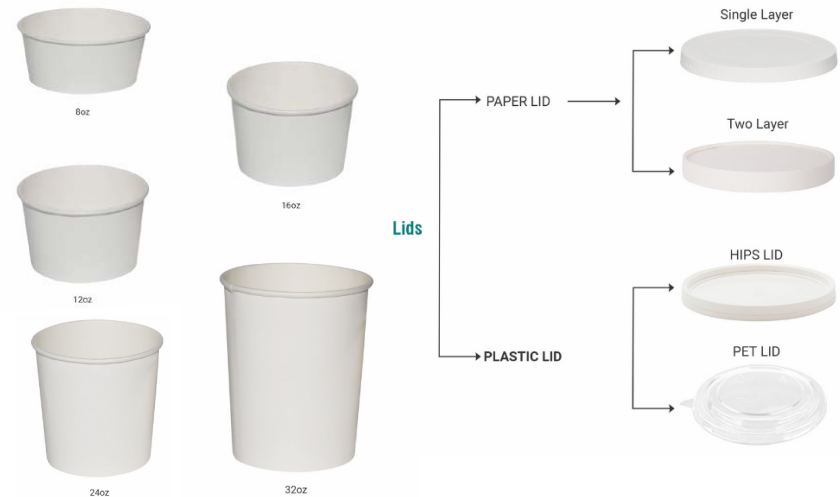
## PAPER TUBS



## PAPER BOWL - KRAFT



## PAPER BOWL - WHITE



# Eco Friendly Paper Cups

## PAPER CUPS - SINGLE WALLS



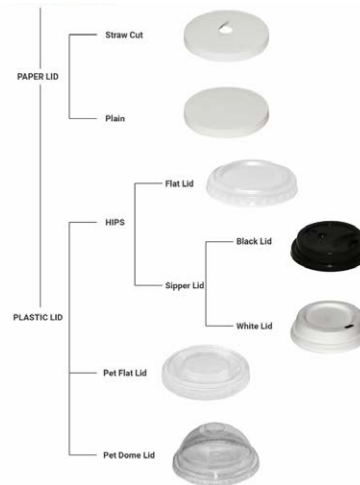
## PAPER CUPS - DOUBLE WALLS



## RIPPLE CUPS



## GLASS LIDS



# Kitchen Utensils

---



# Stainless Steel Cookware

MILK PAN WITH POURING LIP



DEEP SAUCEPAN



SAUCEPAN



SAUTEUSE



STEWPAN



INOX PRO CASSEROLE PAN



INOX PRO STOCKPOT



FRYING PAN



# Stainless Steel Cookware

FRYPAN



INOX PRO CONICAL SAUTÉ PAN



LINCAT CONVEYOR TOASTER



RIO BAR BLENDER



SAUTÉ PAN



BLINIS PAN



FILTERFLOW AUTOMATIC WATER BOILER



MONDO QUICK COFFEE MACHINE





# CATERING APPLIANCES

LINCAT CONVEYOR TOASTER



SPATULA



POTATO MASHER



SOLID SPOON



FILTERFLOW AUTOMATIC WATER BOILER



SLOTTED SPOON



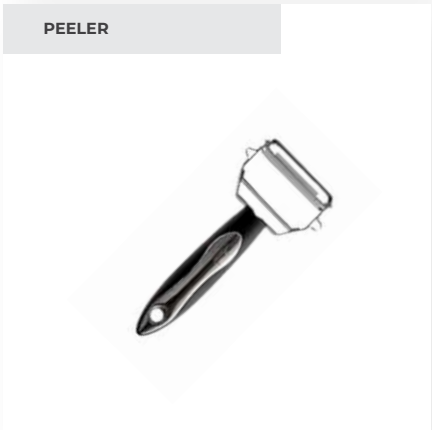
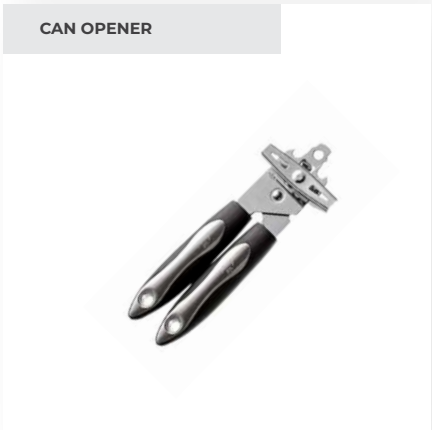
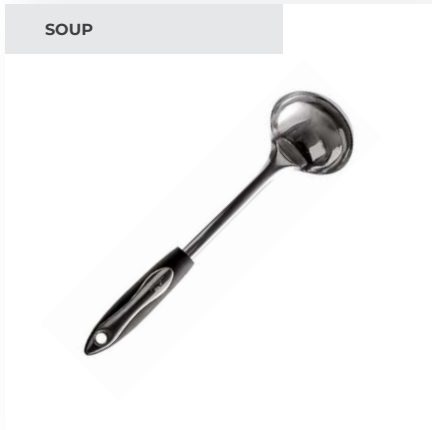
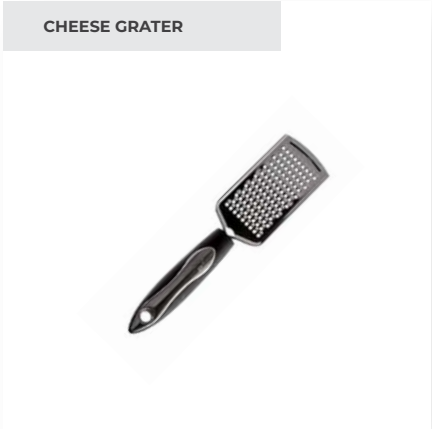
SOLID STEEL STAPULA



SLOTTED STEEL STAPULA



# CATERING APPLIANCES



WOODEN ROLLING PIN



STAINLESS STEEL GN PAN



ELECTRIC WET HEAT  
SOUP KETTLE



PALTA WITH WOODEN  
HANDLE



STAINLESS STEEL  
ROLLING PIN



STAINLESS STEEL GN PAN  
WITH LID



GN PAN TROLLEY RACK



STAINLESS STEEL 1/1 IDLI  
TRAY FOR COMBI OVEN



# Staff Uniform



# PERFORMANCE CHEF COATS

WOMEN'S LONG-SLEEVE  
CHEF COATS  
XS-5XL



MEN'S LONG-SLEEVE  
CHEF COATS  
XS-5XL



MEN'S SHORT-SLEEVE  
CHEF COATS  
XS-5XL



WOMEN'S SHORT-SLEEVE  
CHEF COATS  
XS-5XL



MEN'S LONG-SLEEVE  
CHEF COATS  
XS-5XL



## PREMIUM CHEF COATS

UNISEX HALF-SLEEVE  
XS-5XL



UNISEX LONG-SLEEVE  
XS-5XL



## CLASSIC MEN'S CHEF COATS

WHITE WITH BLACK  
TRIM & PLASTIC  
BUTTONS



SOLID BLACK WITH  
PLASTIC BUTTONS



SOLID WHITE WITH  
PLASTIC BUTTONS



SOLID WHITE WITH  
KNOTTED BUTTONS



# PERFORMANCE

## COOK SHIRTS

MEN'S SHORT-SLEEVE  
CHEF COATS  
XS-5XL



MEN'S SHORT-SLEEVE  
CHEF COATS  
XS-5XL



# PERFORMANCE

## AIRFLOW COOK SHIRTS

MEN'S SHORT-SLEEVE  
CHEF COATS  
XS-5XL



MEN'S SHORT-SLEEVE  
CHEF COATS  
XS-5XL



# PERFORMANCE

## AIRFLOW COOK SHIRTS

MEN'S SHORT-SLEEVE  
CHEF COATS  
XS-5XL



MEN'S SHORT-SLEEVE  
CHEF COATS  
XS-5XL



# CLASSIC WOMEN'S CHEF COATS & PANTS

CLASSIC WOMEN'S  
CHEF COATS  
XS-3XL



JOGGER  
CHEF PANTS



FITTED  
CHEF PANTS



BAGGY  
CHEF PANTS





# Kitchen Hardware

---



POS 615



POS SYSTEM - 815J



POS SYSTEM - 865J



CUSTOMER DISPLAY



PORTABLE SCALE



KOT PRINTER



WEIGHING SCALE (DS-215N)



CASH DRAWER





**THE  
RESTAURANT  
STORE**



## ADDRESS

*D/3/A, Kothari Compound, Near the secret lounge,  
Tiku Ji Ni Wadi, Manapada, Thane (West) 400608.*



## CONTACT US

**9833994244**



## MAIL

**[support@dnyhospitality.com](mailto:support@dnyhospitality.com)**